

4WD System

- All models for Europe, Australia, and G.C.C. Countries have a full-time 4WD system. Models for general countries are available in either a full-time 4WD system or a part-time 4WD system.
- The full-time 4WD system's center differential has a new TORSEN* LSD. (*TORSEN is a registered trademark of ZEXEL.)
- The full-time 4WD system is available in either lever type (a manual shift type), in which the center differential lock is operated with a lever, or lever / button type (with an actuator-motor), in which a button can be pressed to switch the center differential lock. Both types can operate between H (high) and L (low) of the transfer with a lever.

Drive Type	Full-time (Lever / Button type)	Full-time (Lever type)	Part-time
Transfer Type	VF4BM	VF4B	VF2A
Europe	Option	Standard	–
Australia	Option (1KZ-TE engine)	Standard	–
G.C.C. Countries	–	Standard	–
General Countries	–	Standard (3RZ-FE, 1KZ-TE engine)	Standard (5L-E engine) Option (3RZ-FE engine,M/T)

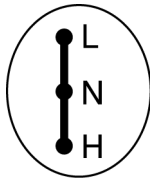
Full-time 4WD

- A TORSEN LSD is provided in the transfer unit of the full-time 4WD system. The TORSEN LSD restrain the slippage of the wheels by automatically and instantly varying the torque distribution ratio between the front and rear wheels in accordance with driving conditions. In this full-time 4WD system, the basic front / rear torque distribution for straightline driving is set 40:60 to improve the vehicle's response during the initial stage of a turn. During the acceleration stage of a turn, this system automatically distributes torque in favor of the rear wheels.

Lever / Button Type (with an actuator motor) : VF4BM Transfer

- A VF4BM transfer which uses a button that can switch the center differential lock between free and lock is now available as a set option with VSC.
- Switching between H (high) and L (low) is performed with the transfer lever. Switching between HF and HL, and LF and LL, is performed pressing the center differential lock switch.
- When the center differential is locked, VSC turns off. The center differential lock indicator in the combination meter and the VSC OFF indicator light up.

Transfer Shift Lever

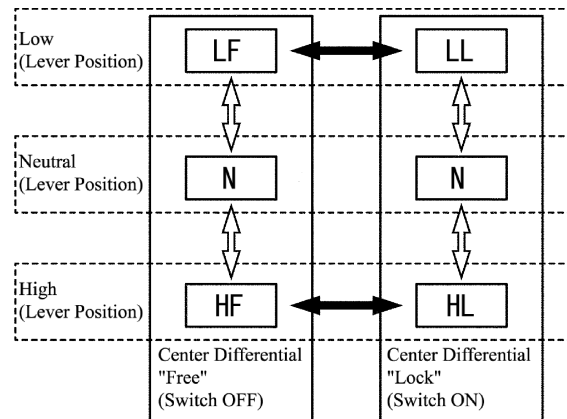


233MO111

Switch Operation
 Center Differential Lock Switching
 Lever Operation
 High-Low Switching

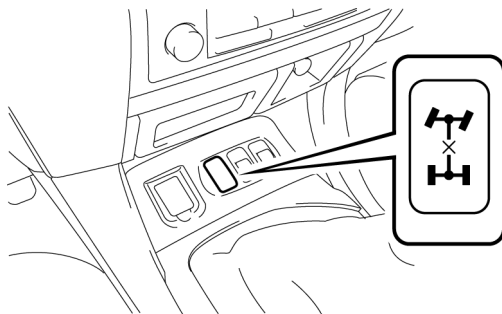
HF: High mode & Center differential "Free"
 HL: High mode & Center differential "Lock"
 N: Neutral mode
 LF: Low mode & Center differential "Free"
 LL: Low mode & Center differential "Lock":

Transfer Pattern

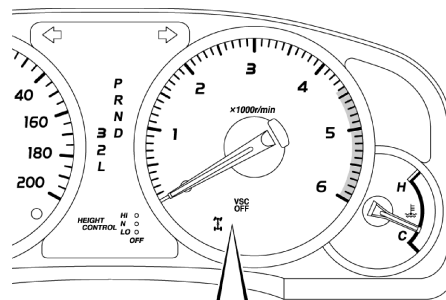


235MO112

Center Differential Lock Switch



233MO110



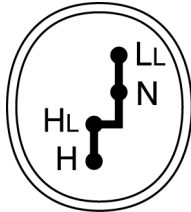
VSC OFF
 VSC OFF Indicator
 Center Differential Lock Indicator

235MO113

Lever Type (Manual Shift Type): VF4B Transfer

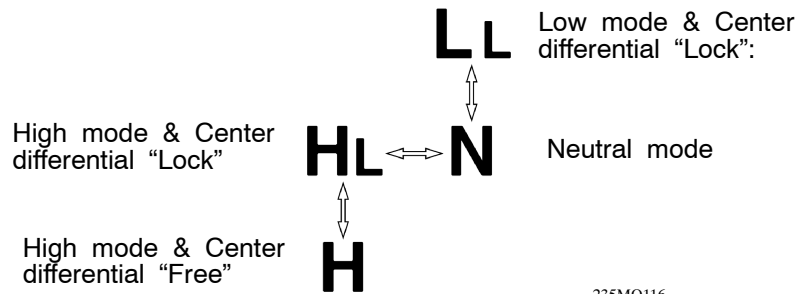
- A VF4B (manual shift-type) transfer that can switch the center differential lock between free and lock and the transfer between H (high) and L (low) with the operation of a lever (VF4B) is now available.
- When the center differential is locked (HL or LL), the center differential lock indicator in the combination meter lights up.

Transfer Shift Lever

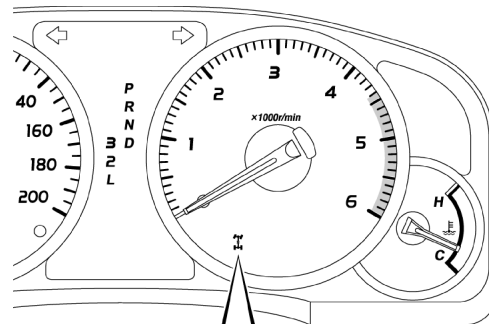


233MO115

Transfer Pattern



235MO116



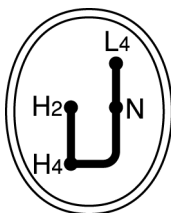
Center Differential Lock Indicator

235MO114

Part-time 4WD

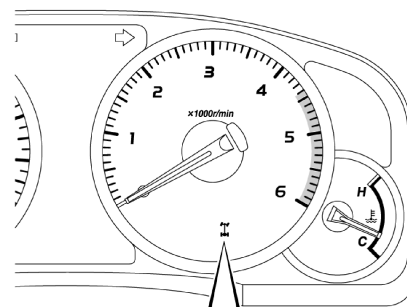
- The new model has a VF2A transfer which can switch among H2, H4, and L4 by means of a lever.
- The free wheel hub construction was discontinued.
- When in 4WD (H4 or L4), the 4WD indicator in the combination meter lights up.

Transfer Shift Lever



233MO118

L4: 4WD Low mode
 N: Neutral mode
 H4: 4WD High mode
 H2: 2WD High mode



4 Wheel Drive Indicator

235MO117